



INDUSTRIAL PRESSURE GAUGES

General purpose industrial use

Type 3: Stainless steel case with brass internals

Type 4: Stainless steel case with stainless steel internals

Service Intended

Suitable for media such as air, water, oil & gases that do not attack copper alloy or stainless steel parts or will obstruct the pressure system. Typical applications will be in the hydraulic, pneumatic, refrigeration, steam, chemical and food and beverage industry.

Case Details

Nominal Dia: 50, 63, 80, 100, 120, 150 & 250 mm diameter.

Material: Stainless steel

Pressure Connections

Material: Type 3: Brass. Type 4: Stainless steel 316
 Sizes: 50, 63, 80, mm dia: 1/8" & 1/4" in BSP or NPT
 Sizes: 100, 150 & 250 mm dia: 1/4", 3/8" & 1/2" in BSP or NPT

Position: See "Mounting Configurations".

Mounting Flange

Material: Polished stainless steel

Position: See "Mounting Configurations".

Pressure Element

Material: Type 3: Cu-alloy. Type 4: Stainless steel.

Geared Movement

Material: Clockwork brass or stainless steel.

Pointer

Collet: Aluminium or brass

Blade: Black aluminium

Dial

Material: Aluminium, white with black lettering.

Window

Instrument glass or plexiglass. (plexiglass recommended for food applications)

Weather Protection

IP 65 Dust & weather proof.

Bezel

Nitrile Rubber Self sealing type.

Working Pressure

Steady: Full scale value

Fluctuating: 90% of full scale value

Short Period: 130% of full scale value

For pulsating pressure, the use of an inlet restrictor and/or liquid filling is recommended.

Accuracy Class

50mm, 63mm & 80mm dia: Class 1.6

100mm, 150mm & 250mm dia: Class 1

Operating Temperature

Ambient: -20 °C to + 60 °C

Medium: +70 °C (soldered tube); + 100 °C (brazed tube)

For live steam use, a syphon tube is recommended.

Optional Extras

Calibration Certificate

Customized scale plates (customer logo, red line, etc)

Special Dials, other than standard (dual scale, bar, psi)

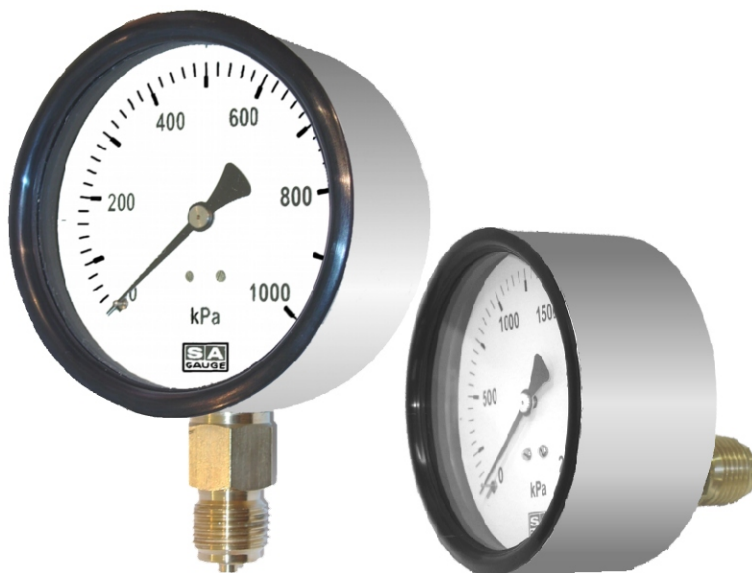
Damped movement (Vibrageauge)

Single or double electrical contacts

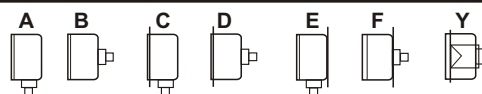
Colour Coding of dial

Drag pointer (maximum set pointer)

Micro adjustable pointer



MOUNTING CONFIGURATIONS



A: Bottom connection, no flange

B: Rear connection, no flange

C: Bottom connection, front flange

D: Rear connection, front flange

E: Bottom connection, rear flange

F: Rear connection, rear flange

Y: Rear con. narrow front ring (clamp mtg)

STANDARD PRESSURE RANGES

Ranges	Figure Interval	Minor Graduations	Ranges	Figure Interval	Minor Graduations
Pressure			Pressure		
0/2.5 kPa	0.5	0.05	0/6 MPa	1	0.1
0/4 kPa	0.1	0.01	0/10 MPa	2	0.2
0/6 kPa	1	0.1	0/16 MPa	2	0.2
0/10 kPa	2	0.2	0/25 MPa	5	0.5
0/16 kPa	2	0.2	0/40 MPa	10	1
0/25 kPa	5	0.5	0/60 MPa	10	1
0/40 kPa	10	1	0/100 MPa	20	2
0/60 kPa	10	1	0/160 MPa	20	2
0/100 kPa	20	2	Vacuum		
0/160 kPa	20	5	-100/0 kPa	20	2
0/250 kPa	50	5	Compound		
0/400 kPa	100	10	-100/0/150 kPa	50	5
0/600 kPa	100	10	-100/0/300 kPa	100	10
0/800 kPa	100	10	-100/0/500 kPa	100	10
0/1000 kPa	200	20	-100/0/700 kPa	100	10
0/1600 kPa	500	50	-100/0/900 kPa	200	20
0/2500 kPa	500	50	-100/0/1500kPa	500	50
0/4000 kPa	1000	100	-100/0/2400 kPa	500	50

Master, customized and other scales such as bar / psi / inHG etc. are available on request

HOW TO ORDER USING OUR PART NUMBERS

3 A 100 G 1/2 B 1000 kPa

Gauge Type: _____

Configuration: _____

Dial Size: _____

Glycerine filled / Dry: _____

Fitting Size: _____

Pressure Range: _____